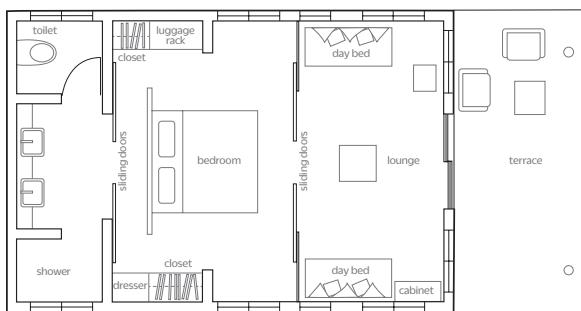




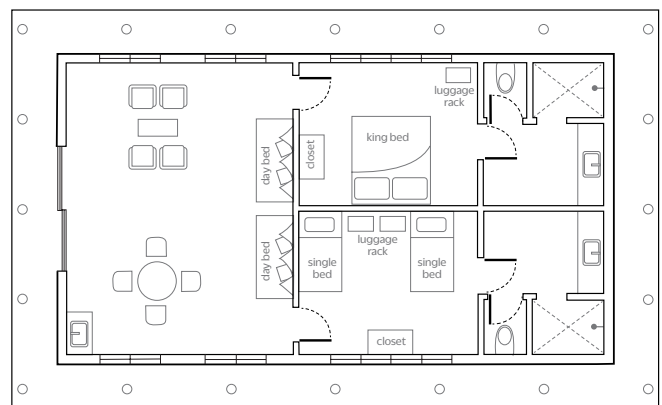
Beautifully designed traditional thatched-roof bures with hand painted tapa ceilings enhance the Fijian experience. Individual bures are located in either the centre of the island surrounded by beautiful gardens with ocean views or beachfront.



ISLAND/OCEAN VIEW/NORTH AND SOUTH BEACH BURE

Approx. 45 sq. m./484.38 sq. ft.

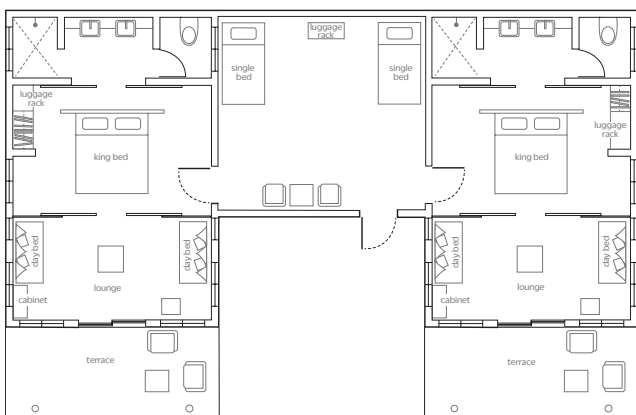
1 king bed and 2 single beds with a sliding privacy screen separating the 2 bedrooms. Fifth person/bed can be added for an additional charge.



GRAND BURE

Approx. 224 sq. m./2,411.12 sq. ft.

2 king beds and 2 single beds. 2 large bedrooms with oversized bathrooms, extensive living area and large verandas. Sleeps up to 6 persons.



FAMILY BEACH BURE

Approx. 120 sq. m./1,291.67 sq. ft.

3 interconnecting bedrooms and 2 separate bathrooms to comfortably accommodate up to 10 persons

ALL BURES FEATURE

- Air conditioning and ceiling fan | Bathroom amenities | Beverage refrigerator Coffee & tea facilities | Daily housekeeping services | Hair dryer | In-room safe | Iron/ironing board | Outdoor patio





● Island Bure
● Oceanview Bure

● South Beach Bure
● North Beach Bure

● Family Beach Bure
● Grand Bure

A Reception & Accounts
B Beach Bar
C Courtesy Bure
D Water's Edge Restaurant
E Engineering
F Family Pool & Nuku Marau Restaurant
G Heli Pad
H Coral Kids Club

I Fijian Village Setup
J Massage Bures
K Nursery
L Malua / Quiet Pool, Jacuzzi & Bar
M Restaurant 1808
N Staff Village
O Woodcarver
P Bush Walk

Q Lali Bar
R Resort Clinic
S Guest Toilets
T Laundry
U Boutique
V Sundowner Bar & Pizza Restaurant, Water Activities
W Volleyball
X Tennis Court & Table Tennis